

# Stephill SLT5000 Lighting Tower

The latest in our range of Lighting Equipment. Our new SLT5000 Mini LED Lighting Tower Illuminates an area greater than 3200 sq. metres at 20 luxury average intensity. The 4 x 200W LED heads mounted on a 5.4 metre mast can also be independently adjusted to provide over 2800 sq. metres multi-directional coverage. The unit is powered by "benchmark" Yanmar L70 Diesel Engine and is fitted with fork lift pockets, central lifting eye and 4 wheel manoeuvrability, allowing the Lighting Tower to be easily loaded or off loaded via a vehicle tail lift.



## Standard equipment & features

- Lights operational with either 115 or 230V selected
- 4.5kVA Generator dual voltage output
- 230V Auxiliary socket for mains feed to the lights
- Fully adjustable tilt and turn light heads
- Adjustable stabiliser legs
- Braked industrial four wheeled trolley kit
- Low oil pressure, high engine temperature & low fuel level shutdowns
- Acoustic weatherproof canopy
- Lifting eye
- Bunded fuel tank
- Oil drain facility

## Control Panel

- DSE 3110 control module
- Double pole MCB overload protection
- AC Voltage Selector switch
- 1 x 16A 230V / BS4343 socket
- 1 x 32A & 1 x 16A 115V BS4343 Sockets
- Overload protection for each individual socket
- Generator/auxiliary mains switch for the lights
- Emergency stop button
- Fuel gauge
- Fuel pump prime button (easy bleed upon service)
- Lockable control panel



## DSE 3110 Auto Start Control Module

- The module will display warnings, shutdowns & engine status information on the back-list LCD screen
- Engine shutdowns include, high engine temperature & low oil pressure. Low fuel level warning
- Monitoring & protecting AC volts & frequency (Hz)
- Hours run counter
- Battery voltage monitoring
- License free PC software

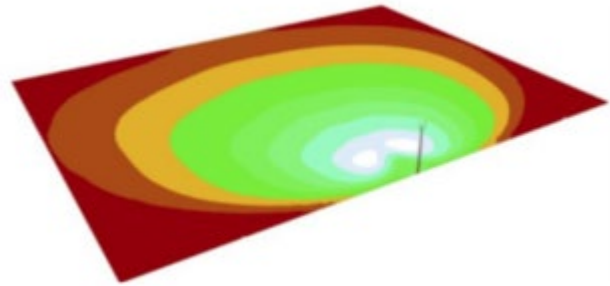
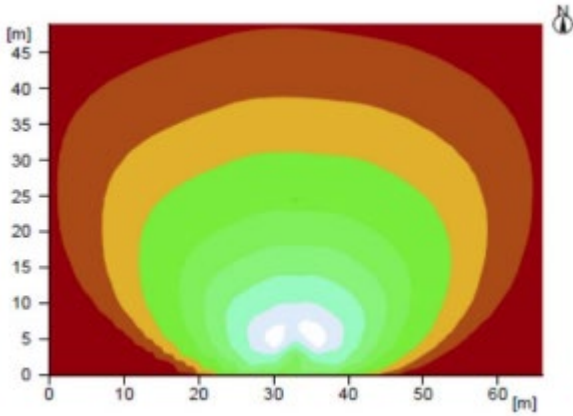
# SPECIFICATIONS

Generator Specification	
Voltage	230 / 115 V
Phase	1
Frequency	50 Hz
Prime Power	4.5 kVA / 3.6 kW
Alternator	Meccalte S16W - 130
Fuel Tank Capacity	34 Litres
Autonomy 75% Load	29 Hours
Autonomy @ 800W	52 Hours (lights only)
LWA	92
dBA @ 7M	67
Dimensions & Weight	
Length (Transport / Fully Deployed)	1200 / 1660 mm
Width (Transport / Fully Deployed)	860 / 1940 mm
Height (Transport / Fully Deployed)	1930 / 5400 mm
Weight (Dry / Wet)	380 / 400 kg
Road Trailer Dimensions & Weight	
Length (Transport / Fully Deployed)	2380 mm
Width (Transport / Fully Deployed)	1250 / 1940 mm
Height (Transport / Fully Deployed)	2130 / 5600 mm
Weight (Dry / Wet)	455 / 475 kg
Engine Specification	
Engine	Yanmar L70NES
Emissions Certified	N/A
Cylinders	Single
Distribution	O.H.V.
Aspiration	Normally Aspirated
Cooling	Air
Displacement	0.320 Litres
RPM	3000
Lamps & Mast Specification	
Lamp Type	LED
Lamp Power	4 x 200 W
Lumens	100,000 LM
Colour Temperature	5000 – 6500K
Ingress Protection	IP66
Mechanical Impact	IK10
Mast Height	5.4 Metres
Winch Load Rating	900 kg
Winch Cable	Stainless Steel



**Prime Power (PRP):** Applicable for supplying power to varying electrical load for unlimited hours in accordance to ISO 8528-1

<b>Single Light Head Direction Illumination</b>	<b>Area – 3234m<sup>2</sup> @ 20 LUX Average</b>
Total Luminous Flux	91528 LM
Total Power	7292 W
Total Power Per Area	0.24W / m <sup>2</sup> (1.2 W / m <sup>2</sup> / 100lx)



<b>360 Degree Illumination</b>	<b>Area – 3234m<sup>2</sup> @ 20 LUX Average</b>
Total Luminous Flux	91528 LM
Total Power	792 W
Total Power Per Area	0.28W / m <sup>2</sup> (1.4 W / m <sup>2</sup> / 100lx)

