

Engine output: **15.4 PS / 11.3 kW**
Machine weight: **1,575 kg**

For Earth, For Life
Kubota

KUBOTA ZERO-TAIL SWING MINI EXCAVATOR

U17-3a



Kubota's U17-3 α ensures versatility and performance. Furthermore the High-Spec model delivers easier and precise operation by utilising AUX proportional flow control via a thumb switch on the joystick.



Kubota Engine

Kubota's unique E-TVCS (Three Vortex Combustion System) enables high-energy output, low vibration and low fuel consumption, while minimising exhaust emissions.

Outstanding Travel Performance

Kubota's U17-3 α delivers powerful performance and the use of short-pitched rubber crawlers helps minimise vibration during travel for improved operator comfort.

Working Range

Kubota has designed the U17-3 α to provide excellent digging depth and reach. The extended dozer length optimises the distance between the dozer and the bucket, making it fast and efficient to collect soil close to the machine. With its wide working range, the zero-tail swing U17-3 α can complete a variety of jobs productively.

Buckets may vary by location.

Type	Standard Model	High-Spec Model
AUX Proportional Flow Control	-	●

KUBOTA ZERO-TAIL SWING MINI-EXCAVATOR

U17-3α

Zero-tail Swing

Kubota's zero-tail swing makes the U17-3α an advanced mini excavator. The 360° swivel, excellent stability and smooth control, combined with unmatched power and efficiency, mean there are no limits to what you can accomplish — even in heavy traffic areas and inside buildings.

Protected Front & Auxiliary Hoses

Front cylinder hoses are routed through the boom for increased protection, extended service life and greater operator visibility. Also, the auxiliary hoses extend only to the top of the arm to protect them from potential damage during narrow-width bucket use.


2-Piece Hose Design

The two-piece hose configuration on both dozer and boom cylinders reduce hose replacement time.

Adjustable Track Gauge

For an increase in stability, the U17-3α's tracks can be expanded to a maximum 1,240 mm. When retracted to 990 mm, you can pass through narrow doorways and tight work areas. And on both ends of the dozer, dozer blade extensions are standard.

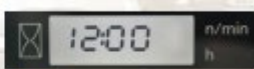




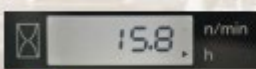
DIGITAL PANEL

Following the excellence of Kubota's Control System, the digital panel puts convenience at the operator's fingertips. The user-friendly digital panel is positioned to the right side of the operator and features one-touch button operation to view the time, hour meter and tachometer. Warning lamps with code numbers on the display will alert you in case of emergencies such as overheating, hydraulic problems or low battery. Programming of the anti-theft keys can also be easily performed with the digital panel. With easier access, simpler settings, easy-to-read indicators and alerts, you'll always be aware of the excavator's functioning status.

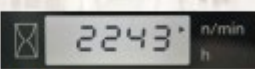
- Fuel Level Gauge**
- Water Temperature Gauge**
- Warning Lamps (Overheating, Hydraulic, Battery)**
- LCD Display (Time, Hour, rpm)**



Time



Hour meter



Tachometer



ROPS/FOPS Canopy

Safety first. The canopy conforms to ROPS (Roll-Over Protective Structure) and FOPS (Falling Objects Protective Structure) Level 1 specifications, so that you can concentrate on what's important — your work.

2-Speed Travel Switch on Dozer Lever

The dozer lever features a 2-speed travel switch, which allows the operator to easily select between power or travel speed during levelling work, depending on the load.

AUX oil flow with proportional flow control (High-Spec model only)

Thumb-operated switches provide quick and easy proportional flow control for AUX1.



Straight Travel

Loading and unloading is safer due to a unique Kubota hydraulic system that provides straight travel, even during simultaneous operations.

Long arm version

Reach further. Dig deeper. Extend your working range, increase your productivity and expand the kinds of jobs you can undertake with the U17-3a's long arm version. At an impressive 1100 mm, a full 150 mm longer than the standard arm version, the long arm version offers a surprising reach for an excavator this size. Kubota has also optimized the excavator's weight to ensure reliably stable operation.



Boom Cylinder

The boom cylinder is situated above the boom for maximum protection, especially during breaker or dumping operation. Movement speeds of front attachments and lifting power have been well adjusted, thanks to the boom cylinder's large-diameter rod and optimal hydraulic pressure.

Protected Motor Hoses

Kubota has enclosed the travel motor hoses within the track frame for added protection—a unique feature for mini excavators of this class.

Easy Maintenance

When maintenance is simple, downtime is greatly reduced and you're more productive. With the U17-3a, routine maintenance is easy—the rear bonnet, side covers and the under-seat cover open up without the need for tools. This allows for quick access to the engine oil gauge, radiator, battery, air and fuel filters, and much more. Accessing the under-deck hydraulics is also fast and easy, because there aren't any bolts to unscrew—just lift the rubber mat and open the floor plate. Plus, for extra strength and easier repairs, the U17-3a's bonnet and side covers are made of steel.



Front Bush Pins

For increased durability, Kubota has included bushings throughout the U17-3a's pivot points on the swing bracket, as well as critical jointed points. And if necessary, the bushings can be easily replaced.



ANTI-THEFT SYSTEM

The ultimate in security that's as easy as turning a key. It's the industry's first standard-equipped anti-theft system, and another original only from Kubota.



THE SYSTEM

Introducing Kubota's simple and secure anti-theft system. Our one-key-system has an IC chip, which only starts the engine when the system recognises the appropriate key. Standard equipment includes one Red programming key, plus two Black operational keys. And up to four Black keys can be programmed. What's more, you get peace of mind knowing your construction equipment couldn't be in safer hands.

EASY OPERATION

No special procedures needed. No PIN numbers needed. Just turn the key. Plus, our simple "one-key-security system" allows access to the cabin door and engine bonnet as well as the fuel tank.

SAFETY/SECURITY

Only "programmed keys" will enable the engine to start. Even identically shaped keys can't start the engine unless they are programmed. In fact, attempting to start the engine with an un-programmed key will activate the system's alarm. This alarm will continue even after the un-programmed key is removed. It will only stop once a programmed key is inserted into the ignition and switched on to start the engine.

EASY PROGRAMMING

One Red programming key and two pre-programmed Black operational keys come standard. If a Black key is misplaced, or if additional Black keys are needed (a maximum of two can be added), key programming is easy. Simply insert the Red key, followed by the Black keys.

Programmed key



Un-programmed key



Standard Equipment

Engine/Fuel System

- Kubota original engine
- Double-element air cleaner

Undercarriage

- 230 mm rubber track
- 2-speed travel switch on dozer lever
- Variable track system
- 3 outer flange-type track rollers on each track

Hydraulic System

- Pressure accumulator
- Hydraulic pressure checking ports
- Straight travel circuit
- Third-line hydraulic return
- Variable displacement pump
- 1st auxiliary circuit (AUX1) via foot pedal control (For Standard-Spec)
- AUX 1 Proportional flow control of auxiliary circuit (For High-Spec)
- Adjustable maximum oil flow on AUX1 via digital panel (For High-Spec)

Safety System

- Engine Start Safety System on left console
- Travel Lock System on left console
- Swivel Lock System
- Anti-theft system

Working Equipment

- 950 mm arm
- Auxiliary hydraulic circuit piping to arm's end
- Working light on boom

Canopy and Operating Area

- ROPS (Roll-Over Protective Structure, ISO 3471)
- FOPS (Falling Objects Protective Structure) Level 1
- Weight-adjustable, semi-suspension seat
- Seatbelt
- 12V power source
- Hydraulic pilot control levers with wrist rests

- Switch and harness for beacon light
- Digital Panel

Others

- Tie down points on the top frame

Optional Equipment

- 230 mm steel track (+ 70 kg)
- 1100 mm arm (+150 mm)



SPECIFICATIONS

Model		*Rubber shoe type		
		Standard version	Long arm version	
Machine weight ¹	kg	1575	1625	
Operating weight ²	kg	1650	1700	
Engine	Model	D902-E4		
	Type	Water-cooled, diesel engine, E-TVCS		
	Output ISO9249 NET	PS/rpm	15.4 / 2300	
		kW/rpm	11.3 / 2300	
	Number of cylinders	3		
	Bore × Stroke	mm 72 × 73.6		
	Displacement	cc 898		
Dimensions	Overall width	mm 990 / 1240		
	Overall height	mm 2340		
	Overall length	mm 3545 / 3550		
	Ground clearance	mm 160		
	Dozer size (width × height)	mm 990 / 1240 × 265		
	Rubber shoe width	mm 230		
	Minimum front swivel radius	mm 1440 / 1480		
	Boom swing angle (left / right)	deg 65 / 58		
	Hydraulic System	P1, P2	Variable displacement pump	
		Flow rate	ℓ / min 17.3 × 2	
Hydraulic pressure MPa (kgf/cm ²) 21.6 (220)				
P3		Gear pump		
Flow rate		ℓ / min 10.4		
		Hydraulic pressure MPa (kgf/cm ²) 18.6 (190)		
Auxiliary (AUX)		Max. flow rate ℓ / min 27.7		
		Max. hydr. pressure MPa (kgf/cm ²) 18.6 (190)		
Max. digging force		arm	kN (kgf) 8.5 (865)	7.3 (744)
		bucket	kN (kgf) 15.2 (1550) / 15.2 (1550)	
Hydraulic reservoir (tank / full)	ℓ 13 / 21			
Max. travelling speed (low / high)	km/h 2.2 / 4.1			
Ground contact pressure	kPa (kgf/cm ²) 27 (0.28) / 28 (0.29)			
Swivelling speed	rpm 9.1			
Fuel tank capacity	ℓ 19			
Noise level	LpA	dB (A) 80		
	LwA (2000/14/EC)	dB (A) 93		
Vibration ³	Hand arm system (ISO 5349-2:2001)	Digging	m/s ² RMS <2.5	
		Levelling	m/s ² RMS <2.5	
		Driving	m/s ² RMS <2.75	
		Idling	m/s ² RMS <2.5	
	Whole body (ISO 2631-1:1997)	Digging	m/s ² RMS <0.5	
		Levelling	m/s ² RMS <0.5	
		Driving	m/s ² RMS <0.64	
		Idling	m/s ² RMS <0.5	

¹ With 33.5 kg Kubota original bucket, full tanks, rubber shoe.
² Machine weight with 75 kg operator.
³ These values are measured under specific conditions at maximum engine speed and can deviate, depending on the operating status.

LIFTING CAPACITY

Lift Point Height	kN (ton)								
	Lift point radius (1.5m)			Lift point radius (2m)			Max. lift point radius		
	Over-front		Over-side	Over-front		Over-side	Over-front		Over-side
2m	950 Arm	-	-	2.6 (0.27)	2.6 (0.27)	2.6 (0.27)	-	-	-
	1100 Arm	-	-	-	-	-	-	-	-
1.5m	950 Arm	4.4 (0.45)	4.4 (0.45)	3.8 (0.39)	3.4 (0.34)	3.1 (0.32)	-	-	-
	1100 Arm	-	-	3.0 (0.31)	3.0 (0.31)	3.0 (0.31)	-	-	-
0.5m	950 Arm	-	-	5.8 (0.59)	3.0 (0.31)	2.8 (0.29)	2.7 (0.28)	1.5 (0.15)	1.4 (0.14)
	1100 Arm	-	-	5.4 (0.55)	2.9 (0.30)	2.7 (0.27)	2.4 (0.25)	1.3 (0.14)	1.2 (0.13)
0m	950 Arm	-	-	5.5 (0.56)	3.0 (0.30)	2.7 (0.28)	-	-	-
	1100 Arm	5.0 (0.51)	4.3 (0.44)	3.9 (0.40)	5.3 (0.54)	2.8 (0.28)	2.6 (0.26)	-	-
-0.5m	950 Arm	6.8 (0.70)	4.6 (0.47)	4.2 (0.43)	4.9 (0.50)	2.9 (0.30)	2.7 (0.28)	-	-
	1100 Arm	7.0 (0.71)	4.3 (0.44)	3.9 (0.40)	4.8 (0.49)	2.8 (0.28)	2.5 (0.26)	-	-
-1.5m	950 Arm	4.5 (0.46)	4.5 (0.46)	4.3 (0.44)	3.1 (0.31)	3.0 (0.31)	2.8 (0.28)	-	-
	1100 Arm	4.7 (0.48)	4.4 (0.45)	4.0 (0.41)	3.2 (0.33)	2.8 (0.29)	2.6 (0.26)	-	-

Please note:
 * Above figures shown are with rubber shoe and crawler fully extended.
 * The lifting capacities are based on ISO 10567 and do not exceed 75% of the static tilt load of the machine or 87% of the hydraulic lifting capacity of the machine.
 * The excavator bucket, hook, sling and other lifting accessories are not included on this table.

★ All images shown are for brochure purposes only.
 When operating the excavator, wear clothing and equipment in accordance with local legal and safety regulations.

KUBOTA EUROPE S.A.S.

19 rue Jules Verceyruisse
 Zone Industrielle - CS 50088
 95101 Argenteuil Cedex France
 Téléphone : (33) 01 34 26 34 34
 Télécopieur : (33) 01 34 26 34 99

KUBOTA (U.K.) LTD

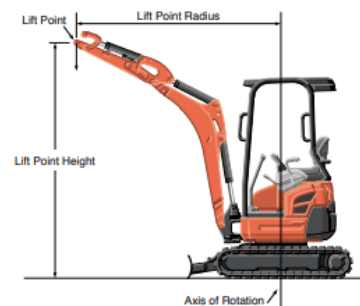
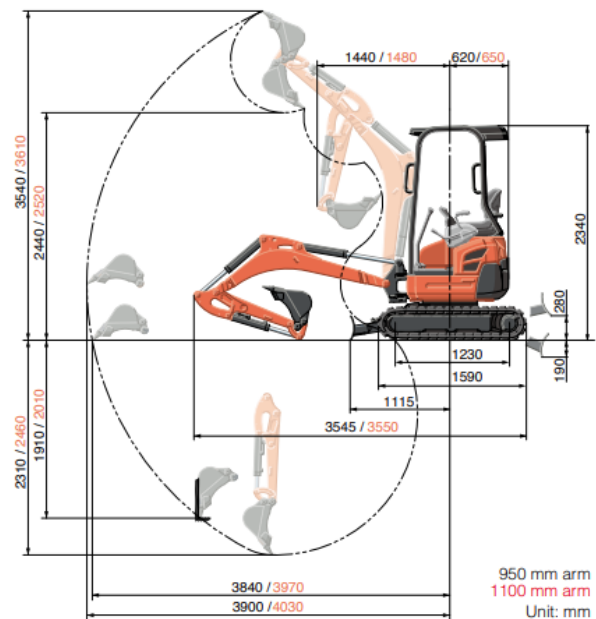
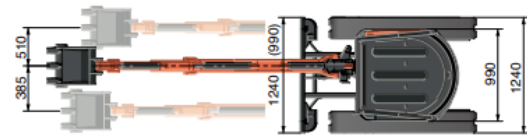
Dormer Road, Thame, Oxfordshire,
 OX9 3UN, U.K.
 Phone : 01844-268140
 F a x : 01844-216685

KUBOTA Baumaschinen GmbH

Steinhauser Straße 100
 D-66482 Zweibrücken Germany
 Telefon : (49) 0 63 32 - 487 - 312
 F a x : (49) 0 63 32 - 487 - 101

<http://www.kubota-eu.com>

WORKING RANGE



* Working ranges are with Kubota original bucket, without quick coupler.
 * Specifications are subject to change without notice for purpose of improvement.

