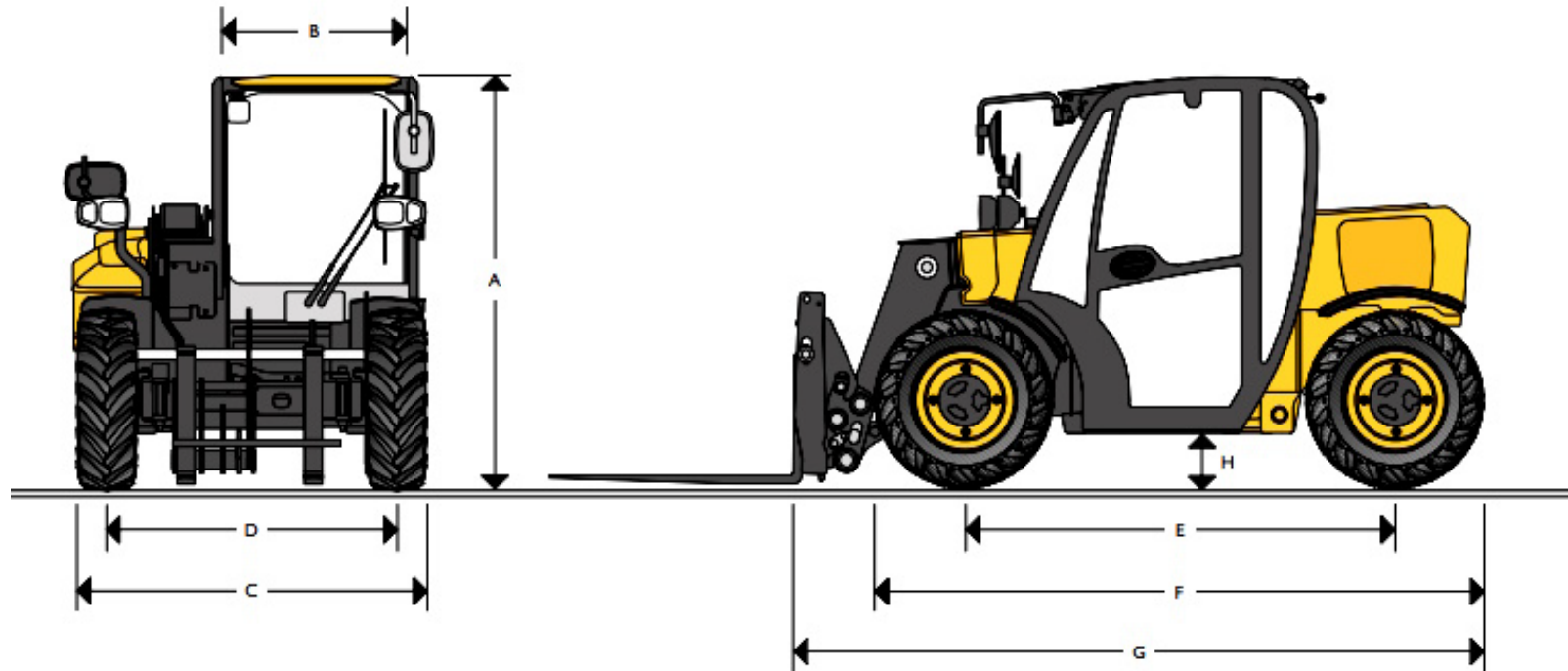


**JCB**

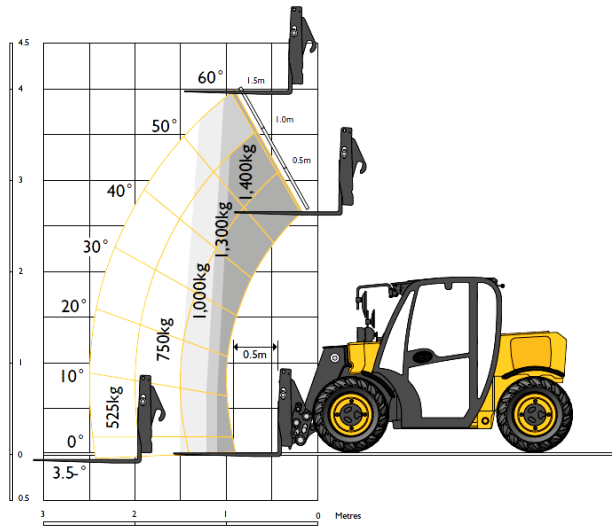


**514-40 Telehandler 4M**  
**SPECIFICATION SHEET**



### Machine Specifications

|   |        |                                     |                      |
|---|--------|-------------------------------------|----------------------|
| <b>A</b> Overall Height                   | 1.80 m | Outer turn radius over tyres        | 2.81                 |
| <b>B</b> Inside width of cab              | 0.87 m | Carriage roll back angle at ground  | 12/30 degrees        |
| <b>C</b> Overall Width (over tyres)       | 1.56 m | Carriage dump angle at max height   | 35 degrees           |
| <b>D</b> Front track                      | 1.29 m | Weight (operating weight)           | 2915 kg              |
| <b>E</b> Wheelbase                        | 1.88 m | Weight (unladen with forks & frame) | 2840 kg              |
| <b>F</b> Overall length to front tyres    | 2.61 m | Weight (unladen, no attachment)     | 2700 kg              |
| <b>G</b> Overall length to front carriage | 2.99 m | Tyres                               | 10 x 16.5 turf       |
| <b>H</b> Ground Clearance                 | 0.19 m |                                     | 12 x 16.5 industrial |



### LIFT PERFORMANCE

|   |         |
|---|---------|
| Maximum lift capacity                         | 1400 kg |
| Lift capacity to full height                  | 1300 kg |
| Lift capacity at full reach                   | 525 kg  |
| Maximum Lift height                           | 4035 m  |
| Reach at maximum lift height                  | 890 m   |
| Maximum forward reach                         | 2510 m  |
| Reach with 1 tonne load                       | 1510 m  |
| Complies with stability test EN 1459 Annex B. |         |

### BRAKES

|                |                                       |
|----------------|---------------------------------------|
| Service brakes | Hydraulically operated self-adjusting |
| Parking brake  | Cable manually operated drum brake    |

### SERVICE CAPABILITIES

|                |           |
|----------------|-----------|
| Fuel Tank      | 27 litres |
| Hydraulic Tank | 25 litres |

### ENGINE

|                     |                    |
|---------------------|--------------------|
| Engine Model        | Perkins 403J-11    |
| Power               | 18.4 kW            |
| Torque              | 66.9 Nm @ 1400 rpm |
| Displacement        | 1.1 Litres         |
| Number of cylinders | 3                  |

### TRANSMISSION

|               |                         |
|---------------|-------------------------|
| Type          | Hydrostatic             |
| Modes         | 2 Speed                 |
| Drive         | Permanent 4 wheel drive |
| Maximum speed | 15 kph                  |

### ELECTRICAL SYSTEM

|                   |             |
|-------------------|-------------|
| System voltage    | 12 Volt     |
| Alternator output | 62 Amp Hour |
| Battery capacity  | 65 Amp Hour |

### HYDRAULICS

|                         |                         |
|-------------------------|-------------------------|
| Maximum system pressure | 230 bar                 |
| Flow Rate               | 23 ltr/min              |
| Joystick control        | Twin lever              |
| Steer modes             | Permanent 4 Wheel Steer |
| <b>Cycle times</b>      |                         |
| Boom raise              | 7 seconds               |
| Boom Lower              | 5 seconds               |
| Extend                  | 8.6 seconds             |
| Retract                 | 4.3 seconds             |
| Bucket Dump             | 2.7 seconds             |
| Bucket Crowd            | 3.7 seconds             |

## ULTIMATE PERFORMANCE IN A COMPACT PACKAGE

Every JCB telehandler is designed to offer superb productivity and our Compact Loadall range is no different. Excellent visibility and manoeuvrability, versatile performance, potent power and innovation-driven efficiency are all part of the package.



### ULTIMATE STRENGTH

We've used innovative, state-of-the-art design and manufacturing processes to ensure that strength, durability and reliability are built in.

### ULTIMATE COMFORT

Our Compact Loadall cabs are great places to work, with high levels of comfort, easy-to-use controls and good visibility, keeping operators productive.

### ULTIMATE PRODUCTIVITY

Our Compact Loadall range provides powerful performance and versatility with excellent manoeuvrability, whilst making the most of every drop of fuel.



### ULTIMATE EFFICIENCY

Our Compact Loadall range offers extremely low operational costs in the short term, whilst holding their value in the long term.

### ULTIMATE SAFETY

Safety is paramount on any site. That's why we've designed our new JCB Compact Loadall range to protect machine, operator and bystanders alike.